

Fusion 2.1

TM – Creation, Import and Export (Trados .txt format)

Table of Contents

| | |
|---|----|
| Creation of a new Translation Memory | 3 |
| Exporting the Translation Memory | 7 |
| Importing a Trados export (.txt format) into a Translation Memory | 10 |

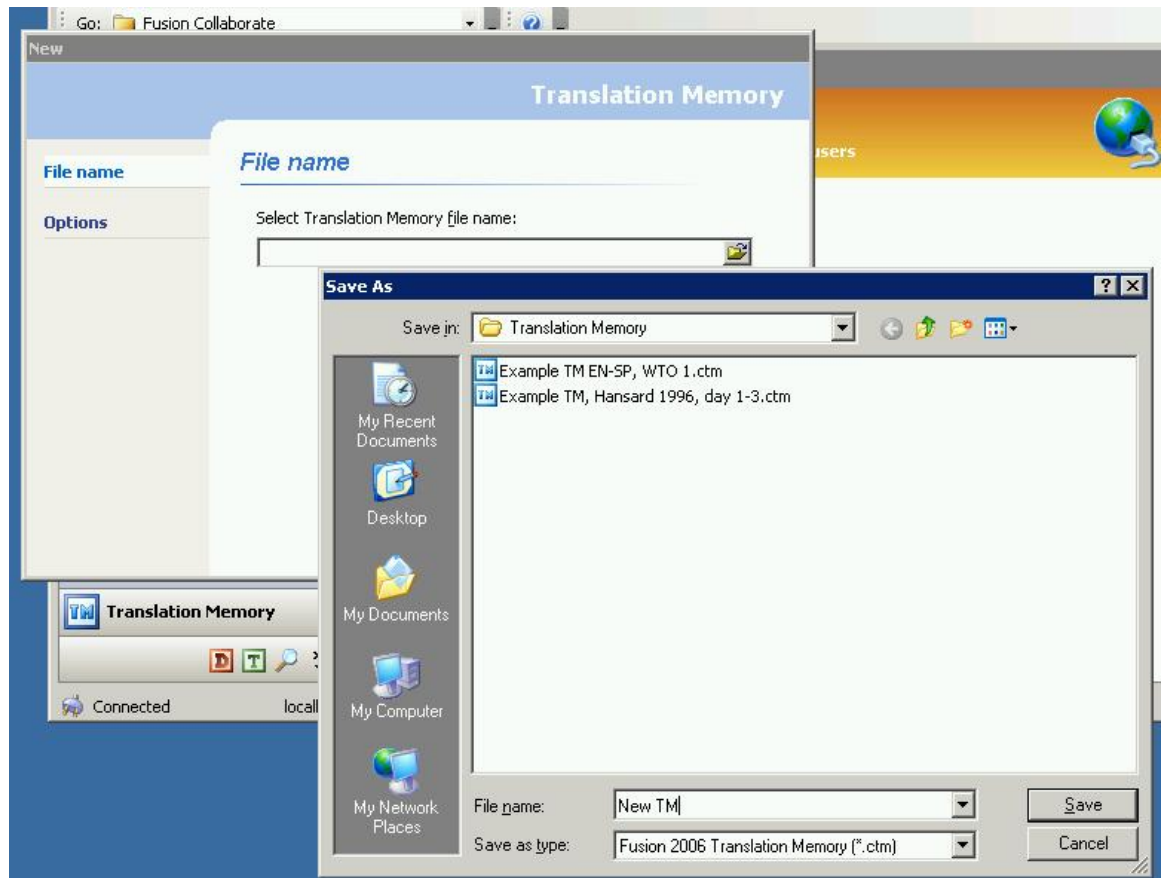
Creation of a new Translation Memory

Here are the steps to follow to create a new TM:

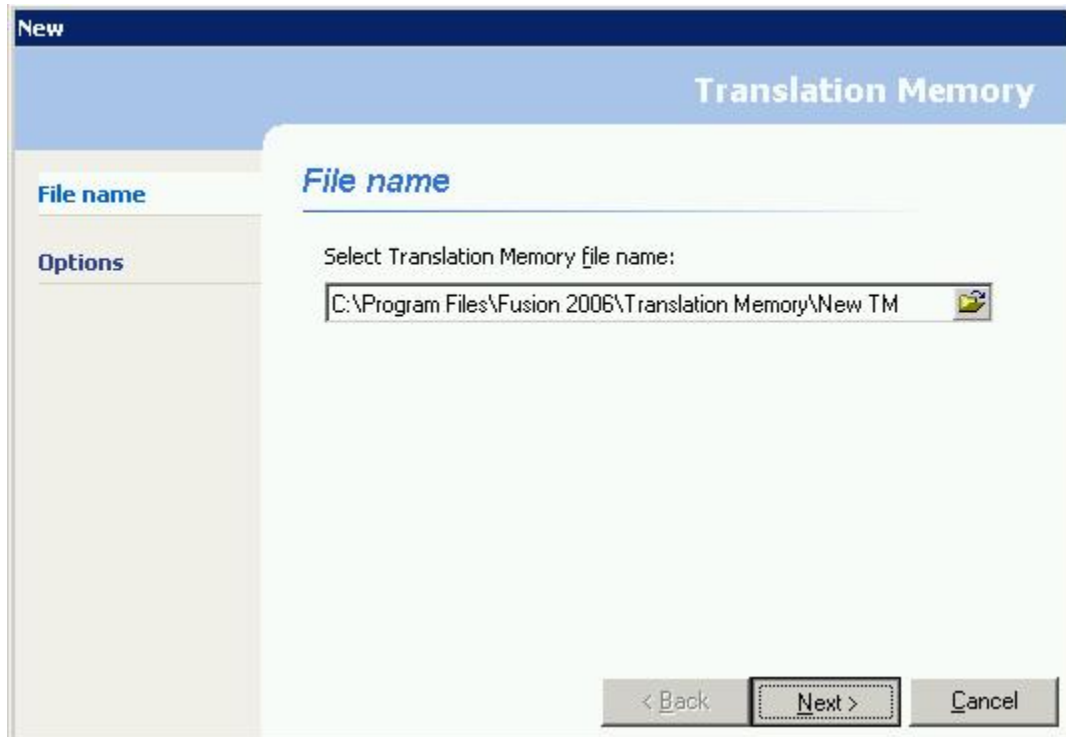
- 1- Launch Fusion
- 2- Click the 'New' button, select 'Translation Memory'



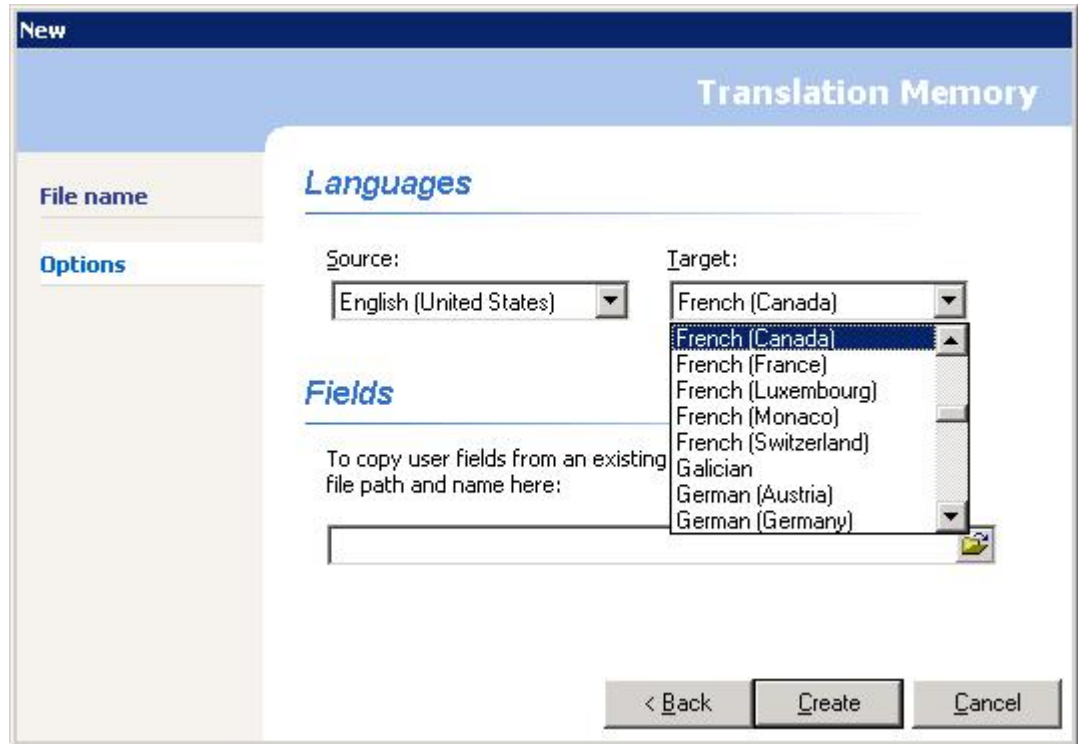
- 3- Select a name and a location for the new TM by clicking the 'Browse' button.



4- Once the name and location have been entered, click the 'Next' button



- 5- Select the source and target languages for this TM from the scroll-down lists



6- Finally, click 'Create'

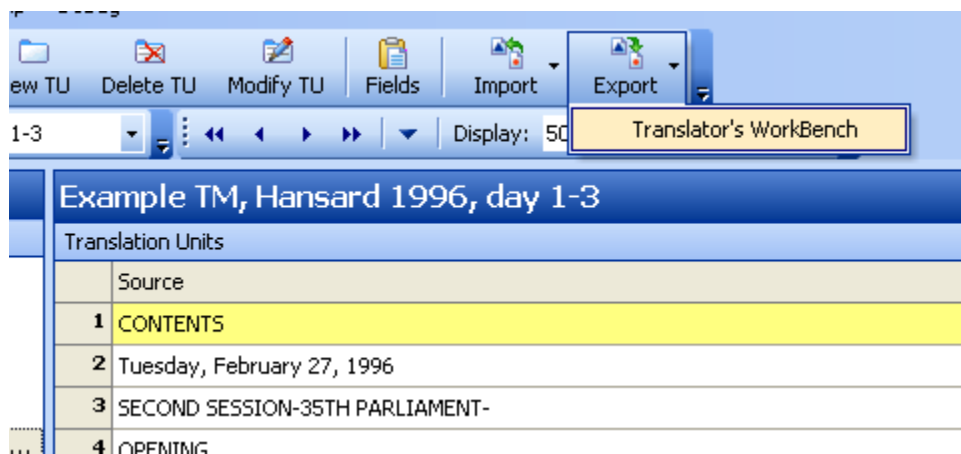
That's it! Your TM has been created and is now open in Fusion.

Exporting the Translation Memory

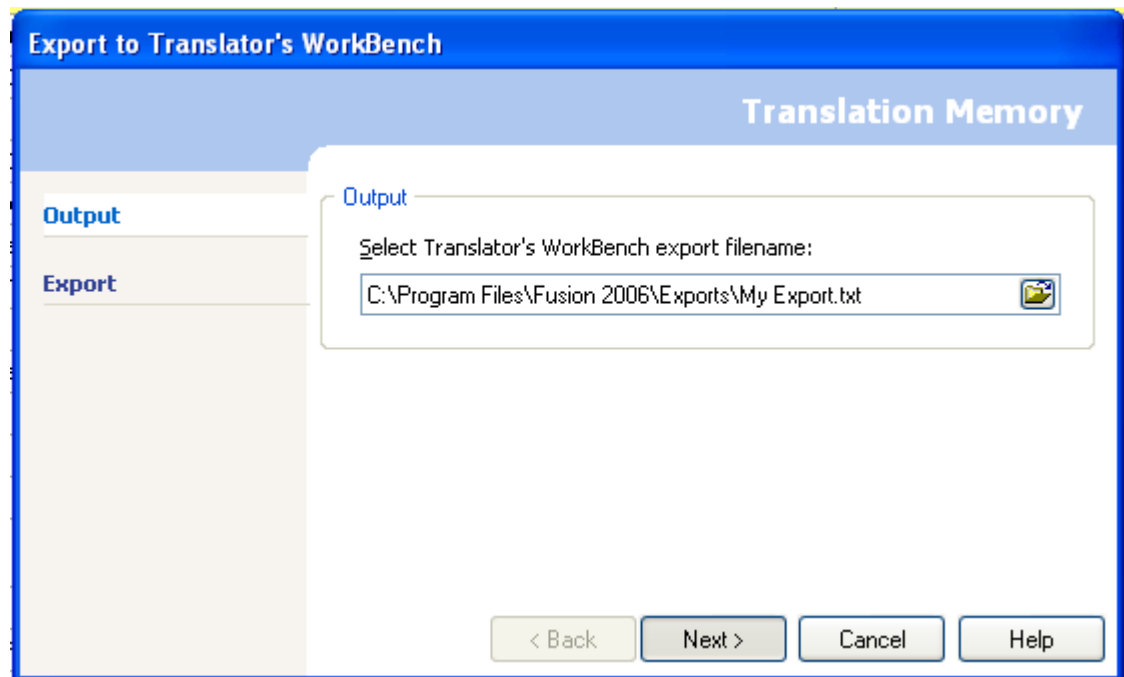
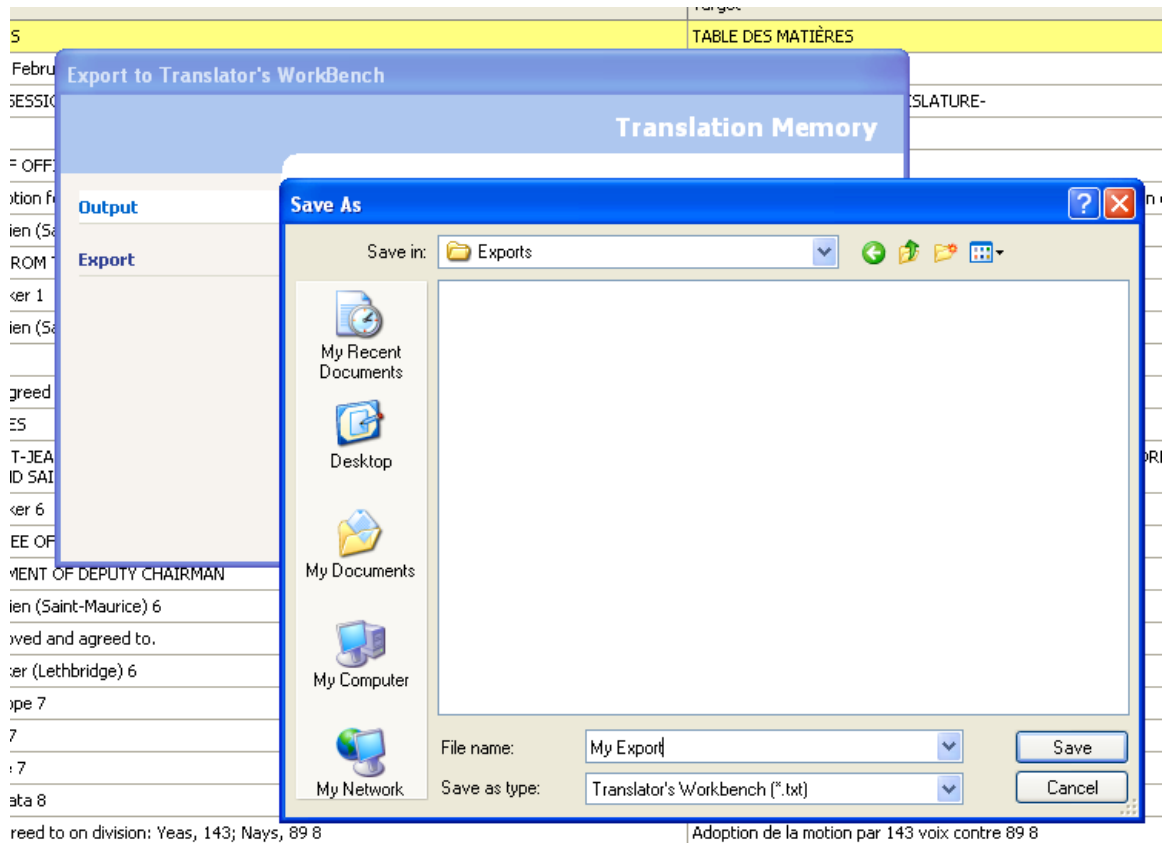
TMs can be exported to a text format compatible with Trados Workbench, in order to transfer their content from one TM to another.

The steps to export a TM are as follows:

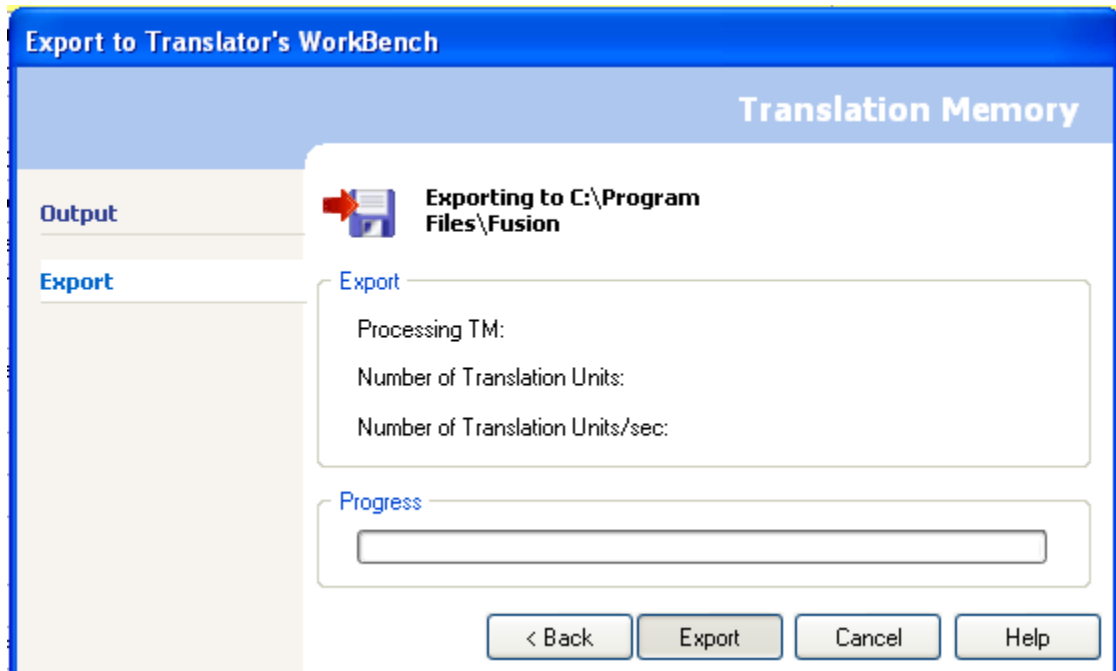
- 1- Open your TM in Fusion
- 2- Click the 'Export' Button located in the Fusion toolbar, and select 'Translator's Workbench':



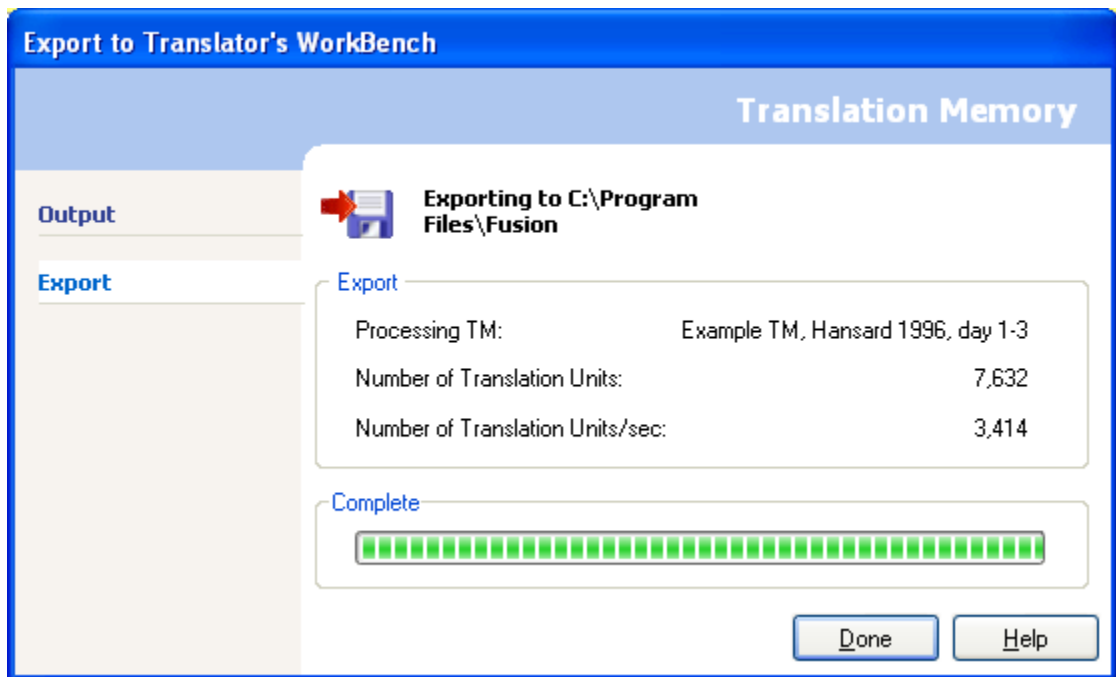
- 3- Select a location and a name for your export file, then click 'Next':



4- Finally, Click 'Export':



5- When your export is completed, click 'Done':



Once your export file is ready, you can use it to import the content of your TM either in another Fusion TM, or in a Trados TM.

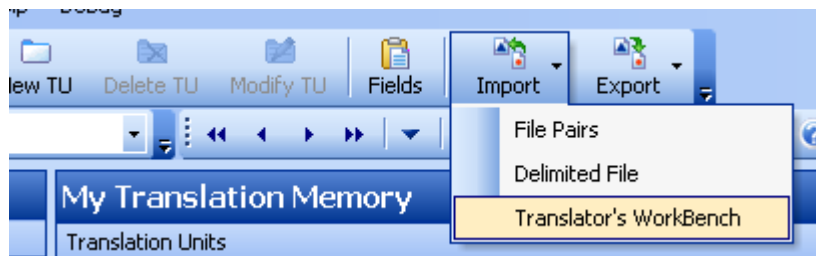
Fusion 2.1 TM – Creation, Import and Export (Trados .txt)

Importing a Trados export (.txt format) into a Translation Memory

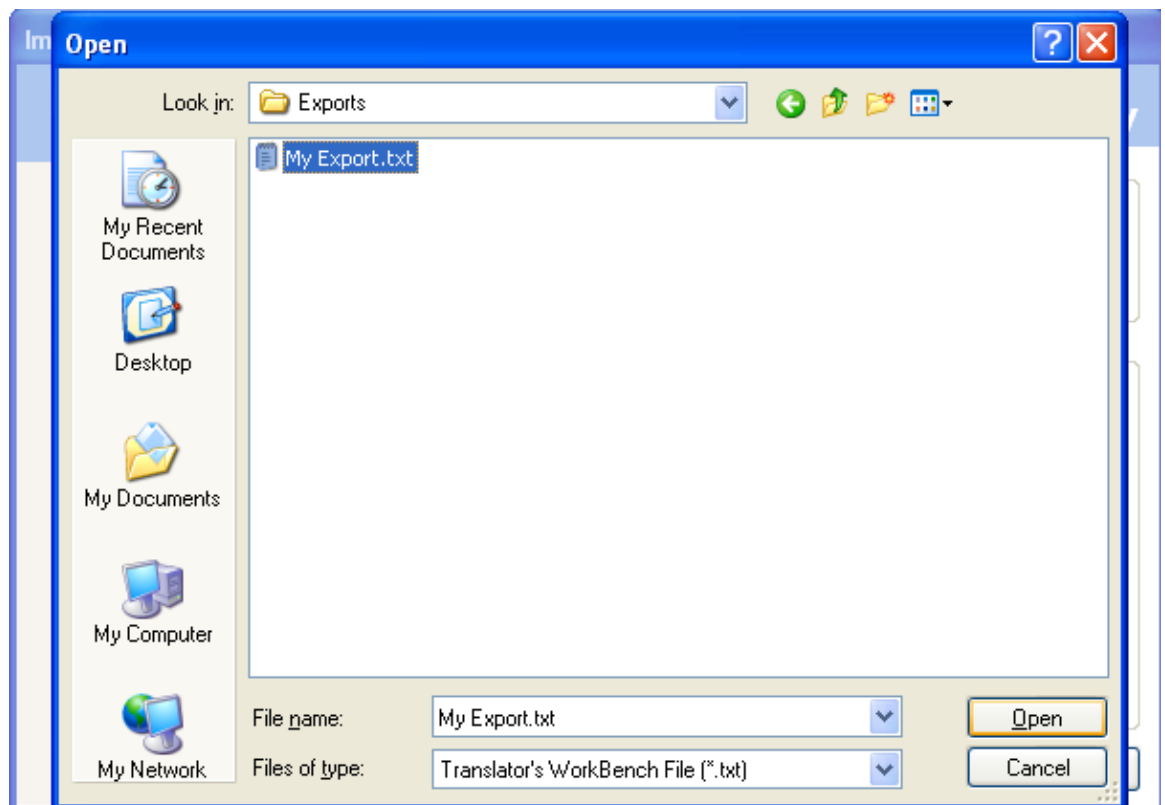
You can import different kinds of data into an existing TM.

The steps to import a trados text export are as follows:

1. Open your TM in Fusion
2. Click the 'Import' button in the Fusion toolbar, and select 'Translator's Workbench';



3. Select the file you wish to import:



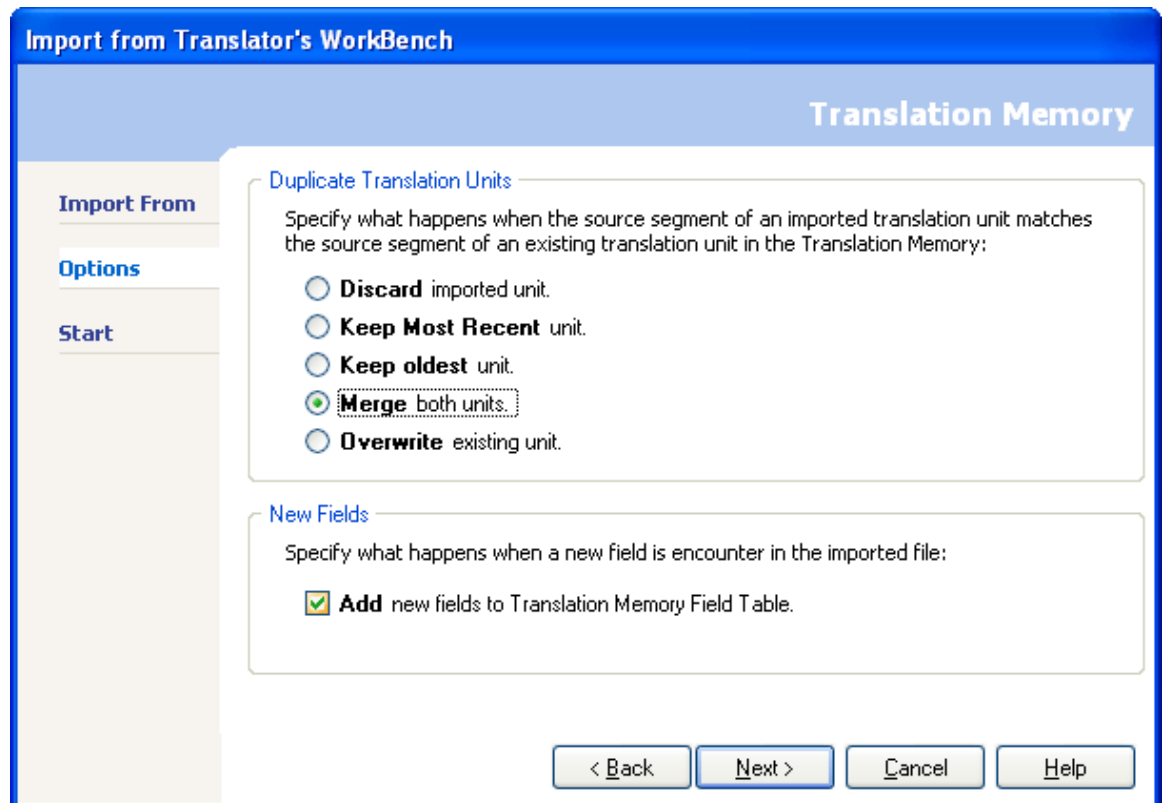
Fusion 2.1 TM – Creation, Import and Export (Trados .txt)

4. If the language tags are not automatically recognized, select which tags corresponds to the source and target languages, then click 'Next':

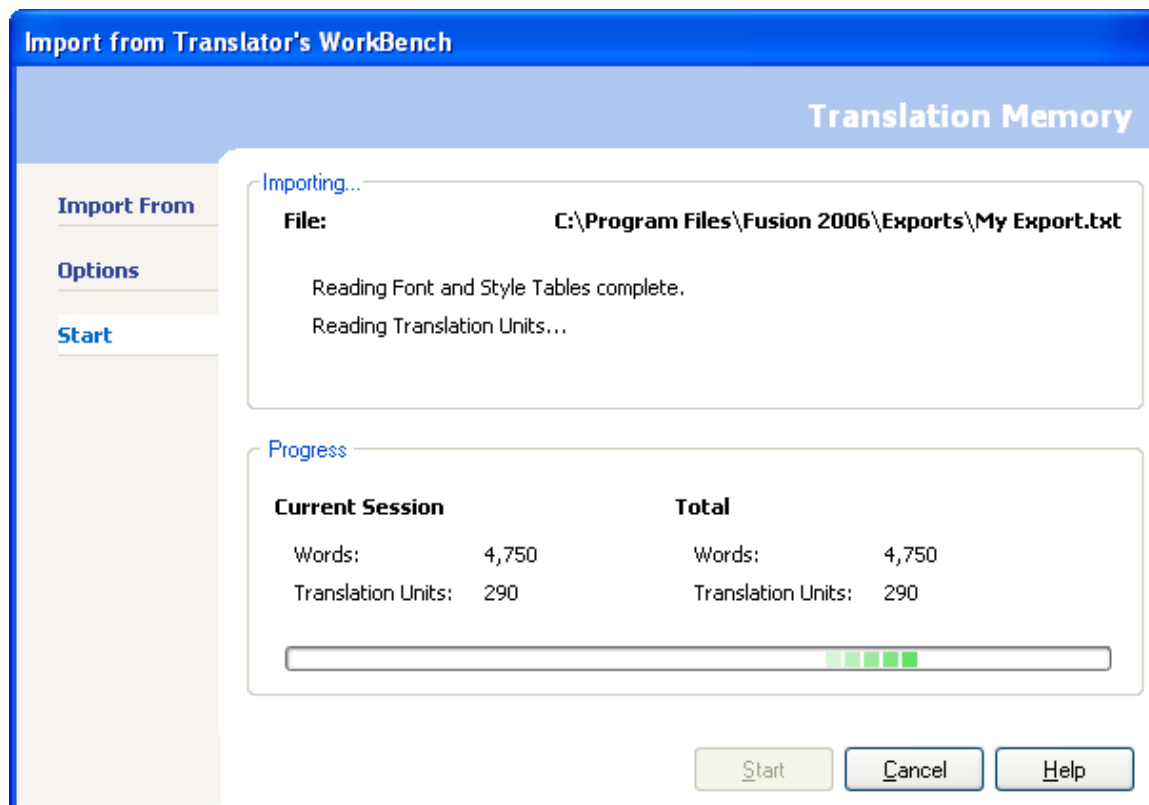


5. Select which action you wish Fusion to take in case a TU being imported offers a translation different from an existing one. Your options are:
 - keep the most recent
 - keep the oldest
 - keep the existing TU
 - replace the existing TU with the imported one
 - 'Merge' both TUs, meaning the existing one will be kept and a new one will be created with the new translation

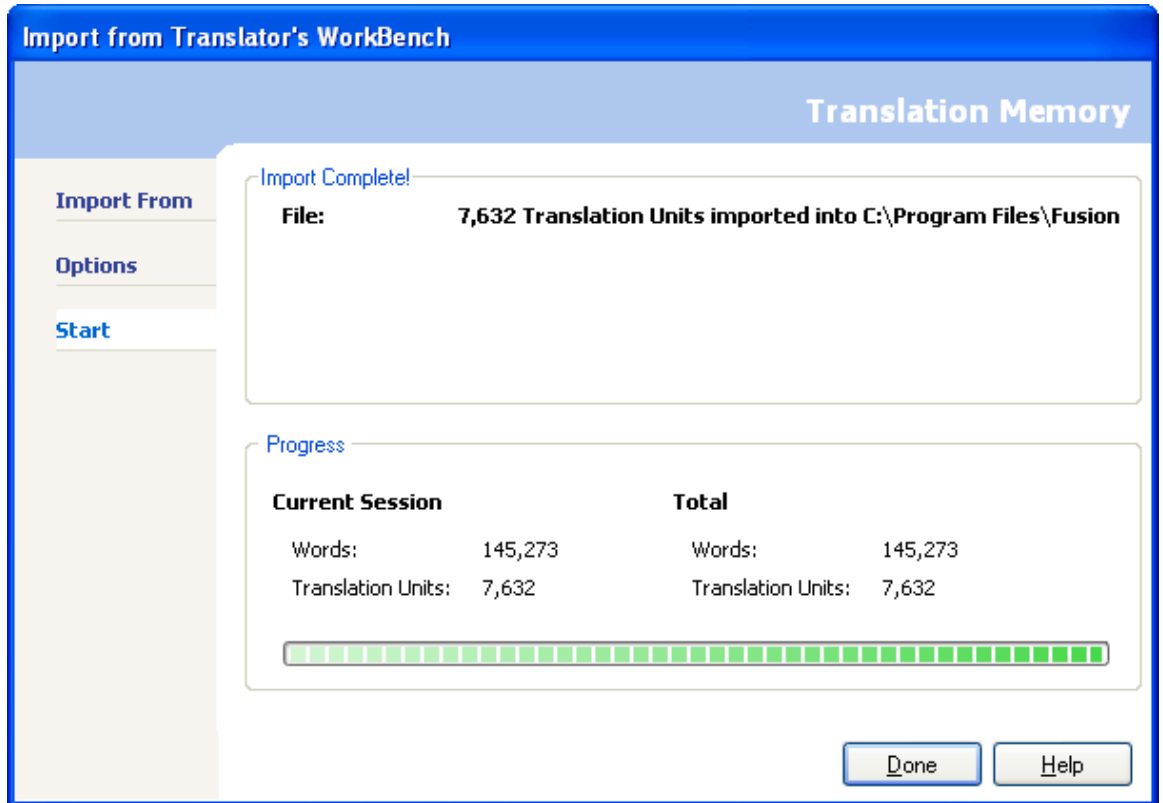
Then click 'Next':



6. Finally, click 'Start' to launch the import:



7. When the import is completed, click 'Done':



That's it, your import is done.

Notes: The import can take several minutes depending on the size of the TM and the size of the import. Fusion will not return any results while it is importing, so if you are importing on a server TM, warn the users that Fusion will not be available for the duration of the import.